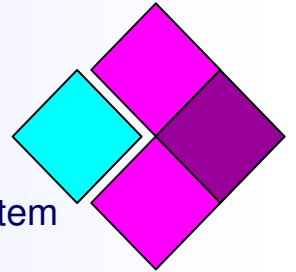


# WinPATS™

Professional Asset Tracking System



WinPATS™ will run on virtually any industry standard desktop PC running Windows ME, NT, XP, 2000 or later, either as a stand-alone or a client/server network installation. Network support includes Novell, Windows and Citrix/terminal services. Database is a stand alone application that does not require other programs for it to run, and can export data in various formats including spreadsheets and other databases.

Please feel free to contact your local WinPATS™ representative if you have any further queries on the WinPATS™ program. It would be our pleasure to send you additional product information on the system, together with a multimedia demonstration CD which has comprehensive information and resources on it.

## System Requirements (Minimum Recommended)

- Pentium 2, 600Mhz or higher
- 75MB of available hard disk space
- 64MB RAM
- Microsoft Windows 2000/XP
- CD-ROM Drive
- Available Serial Port, or
- Available USB Port - with an installed USB to Serial Driver

**WinPATS™ is available in three versions:  
Base, Lite & MX**

## Key Benefits

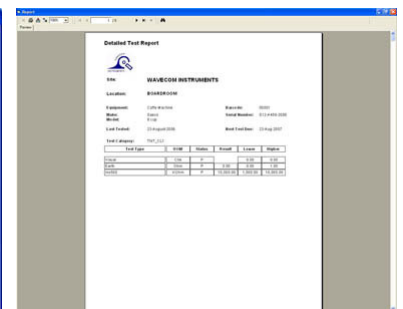
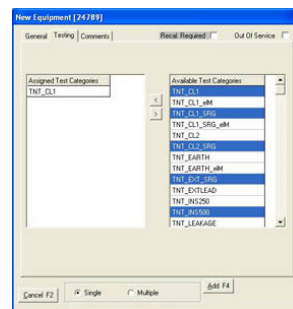
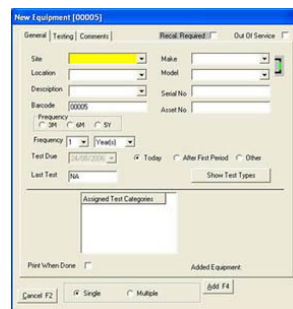
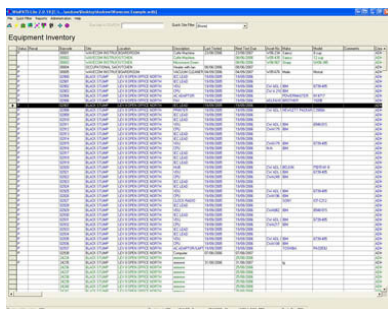
- Improved inventory control;
- Improved asset management;
- Improved audit procedures & accurate audit trail;
- Improved testing and recording procedures;
- Improved equipment planning;
- Improved maintenance;
- Reduced labour high throughput testing ;
- Optimum asset Safety management utilisation.

## Reports

- WinPATS™ is supplied with a Report Generator. System Features include:
- Pre-formatted reports
- Custom report writer tool
- Multiple selection & report sorting
- Report generation to various outputs including printer, screen, file, and email

Reporting can include practically any fields and from virtually any area in the system, e.g. Assets, Equipment, Locations, Product type, Test status, and date order requirements. A comprehensive query facility is also provided to allow the user to target a particular group of assets for reporting purposes.

The reports specific to each optional WinPATS™ module is included with appropriate module.



**Wavecom Instruments Pty Ltd**  
257A Grange Road FINDON SA 5023  
Phone: (+61) 08 8243 3500, Fax: (+61) 08 8243 3501  
Suite 8, 19 Ellingworth Parade BOX HILL VIC 3128  
Fax: (+61) 03 9897 4711, (+61) 03 9897 4766  
Email: sales@wavecom.com.au

**Distributed By:**