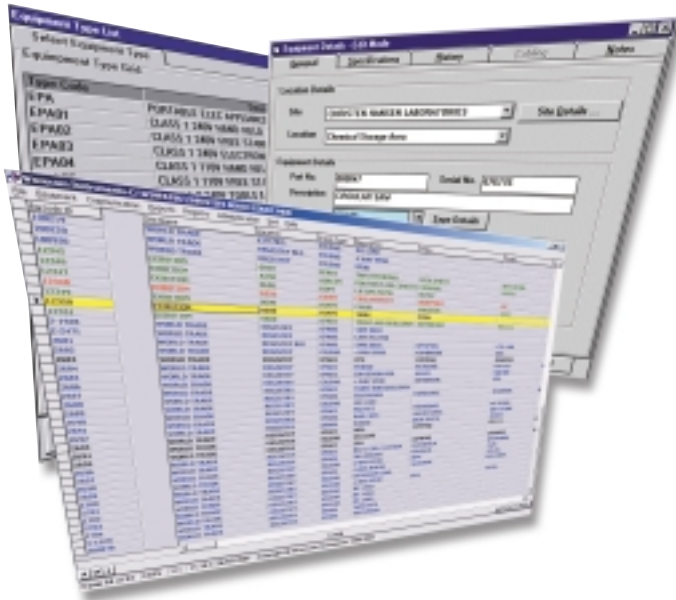


WinPATS™

Appliance Testing Package

WinPATS™ is the leading Windows based

Professional Asset Tracking System software
for Occupational Safety Applications



Apart from the task of maintaining equipment, employees are often faced with the massive clerical workload of maintaining a reliable and accurate recording system. Once regular checks of all portable appliances have been completed, a comprehensive record system must be kept!

The WinPATS™ portable appliance testing software system will eliminate a substantial part of this workload when used in conjunction with a portable appliance tester capable of storing and transmitting test results.

WinPATS™ Features

- Asset register
- Equipment performance monitoring
- Automated test data uploading
- Records can be saved as files
- Workload forecasting and test scheduling
- Enhanced report capability
- Extended barcode facility
- Equipment history profile
- Powerful search facility
- Pass/Fail settings

The WinPATS™ software package keeps a register of all appliances, produces regular checklists and records the results of inspections and maintenance thus helping to fulfil the requirements of the OH & S, AS-3100 and AS-3760 standards.



WinPATS™ Features

- Merging data base test results from multiple downloads and devices
- Compliance Certificate print outs
- High security features allowing user controls and controlled access
- Overdue testing and maintenance
- Overseeing OH & S general testing requirements
- Mechanical equipment testing capability

The **WinPATS™** program provides workload forecasts, asset management, appliance testing schedules, audit trails, inventory control, equipment performance monitoring and much more!

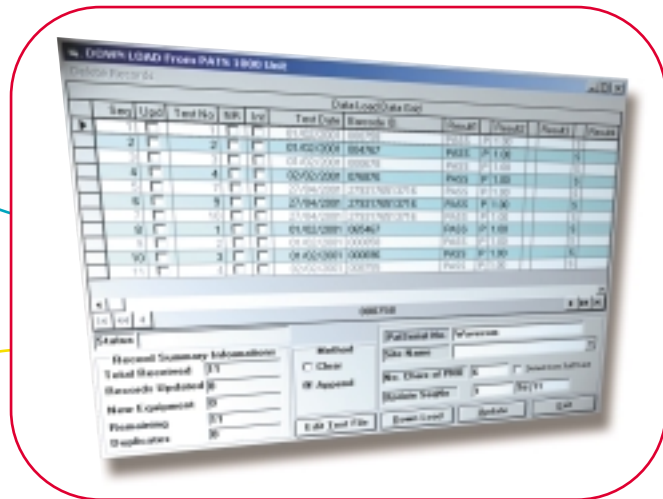
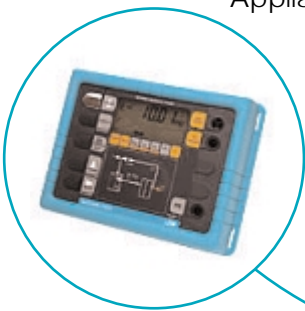
Innovative design, featuring built in software interlocks, has led to a system where false data entry and input errors are virtually eliminated.

The powerful data search facilities for finding outstanding equipment to be tested or checked are all available on **WinPATS™**.

WinPATS™ is easily interfaced to a range of recording and input devices including smart scanners, appliance testers, PDAs and numerous other data terminals.

Appliances are identified by barcode, resulting in little or no paperwork.

The records stored on such devices are simply downloaded ready for immediate processing and reporting.



WinPATS™ has been developed over 6 years and is constantly undergoing evaluation and being updated. It is currently being used in over 1000 sites around Australia by many large organisations in the electrical test and tagging industry.

Wavecom Instruments offers a comprehensive nationwide customer support service for the **WinPATS™** appliance testing package.

Our engineers have extensive experience in software and hardware development and can customise a particular application to suit your needs.

For more information or assistance please contact our skilled technical and sales staff.

Optional Modules:

- Machine Maintenance
- RCD Testing
- Switchboard Maintenance
- Bill of Materials
- Scanner Interface

Distributed by:



Wavecom Instruments Pty Ltd

45 Charles Street Ph: (61) 08 8331 8892

Norwood SA 5067 Fax: (61) 08 8331 3648

Email: admin@wavecom.com.au

www.wavecom.com.au